

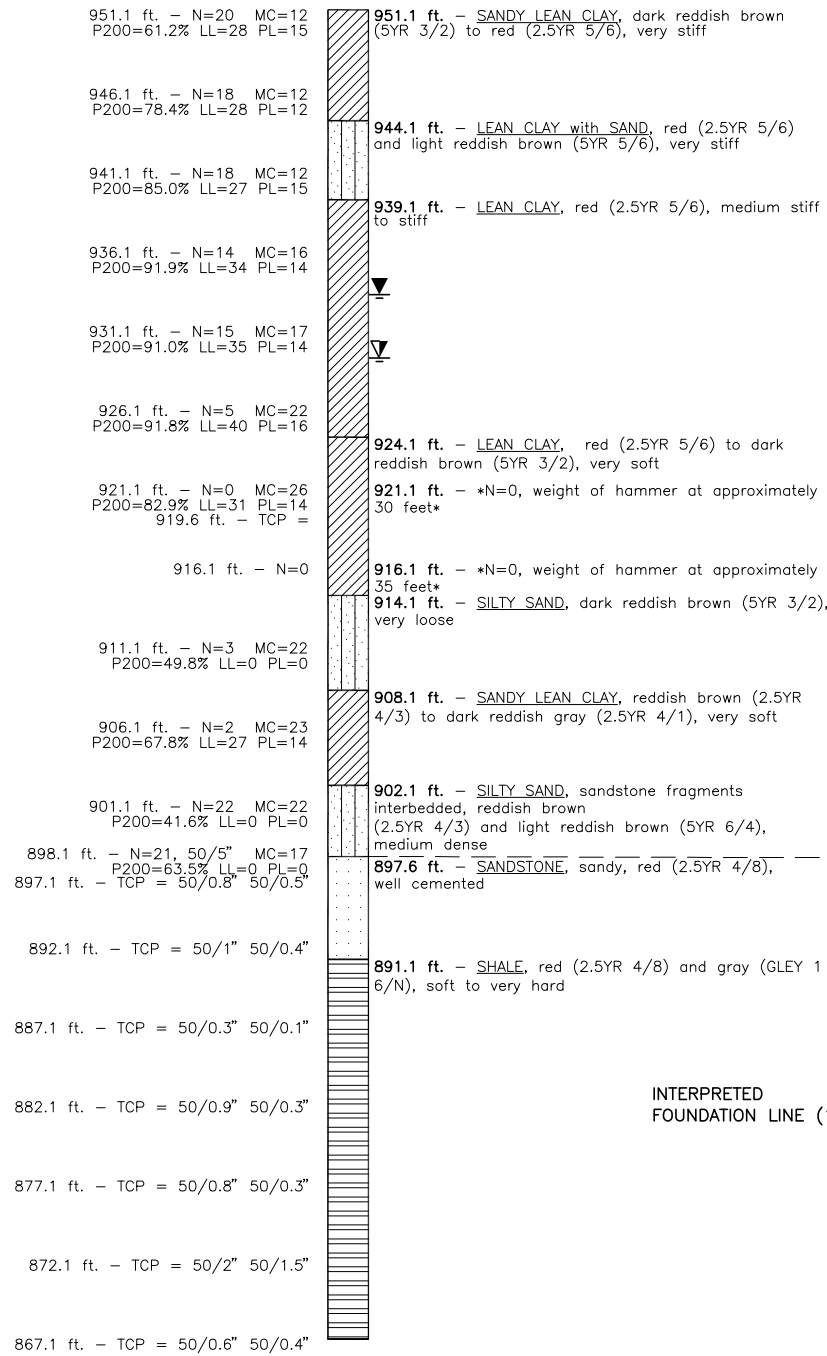
**BORING NO. B-1**  
**STA. 66+68**  
**34' RT.**

WATER LEVEL CHECK: 18.0 FT.  
 (10/7/2014)

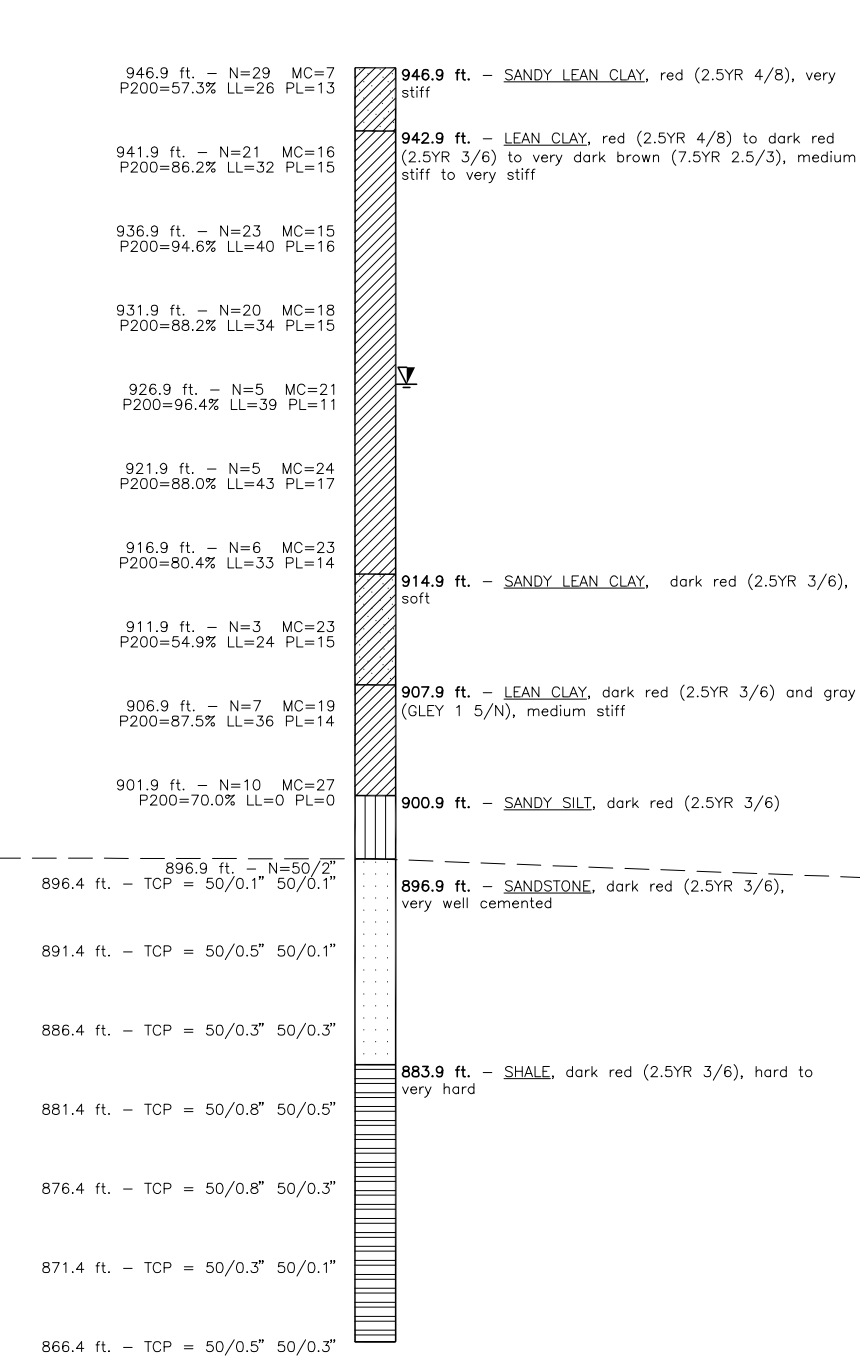
**BORING NO. B-2**  
**STA. 67+25**  
**26' LT.**

WATER LEVEL CHECK: NONE  
 (~10/7/2014)

960  
950  
940  
930  
920  
910  
900  
890  
880  
870  
860



867.1 ft. - Boring Termination Depth = 84 feet  
 Boring Completed and Grouted on 10/7/14



866.4 ft. - Boring Termination Depth = 80.5 feet  
 Boring Completed on 10/3/14 and Grouted on 10/7/14

INTERPRETED FOUNDATION LINE (1)

(1) FOR ESTIMATION PURPOSES ONLY.

960  
950  
940  
930  
920  
910  
900  
890  
880  
870  
860

**GEOLOGY:**

DIVISION FOUR OF THE "ENGINEERING CLASSIFICATION OF GEOLOGICAL MATERIALS", PUBLISHED BY THE OKLAHOMA DEPARTMENT OF TRANSPORTATION (ODOT) INDICATES THE PROJECT SITE IS UNDERLAIN BY THE GARBER UNIT (PG).

THIS UNIT CONSISTS OF A SERIES OF RED CLAY SHALES, RED SANDY SHALES, AND RED MASSIVE COMMONLY CROSS-BEDDED LENTICULAR SANDSTONES. THE SANDSTONES ARE MORE PROMINENT IN THE SOUTHERN PORTION OF DIVISION FOUR. NORTHWARD, THE SANDSTONES THIN AND SHALES BECOME MORE DOMINANT.

THE TOTAL THICKNESS OF THE UNIT IS ABOUT 400 FEET IN OKLAHOMA COUNTY, IT THICKENS TO ABOUT 600 FEET IN GARFIELD COUNTY AND CONTINUES TO THICKEN NORTHWARD TO THE STATE LINE.

THE GARBER UNIT OUTCROPS IN A 12 TO 24 MILE BAND ACROSS GRANT, GARFIELD, KINGFISHER, LOGAN, NOBLE AND OKLAHOMA COUNTIES OF DIVISION FOUR. TOPOGRAPHICALLY, THE UNIT IS ONLY SLIGHTLY MORE ROLLING IN THE NORTHERN DIVISION FOUR THAN THE OVERLYING HENNESSEY UNIT AND UNDERLYING WELLINGTON UNIT. IN SOUTHERN DIVISION FOUR, THE INCREASE IN SANDSTONE RESULTS IN A ROLLING TOPOGRAPHY WITH THE HILLS GENERALLY CAPPED BY SANDSTONES AND COVERED BY THICK GROWTHS OF BLACKJACK OAK, AND POST OAK TREES.

NOTE: GROUNDWATER LEVELS WERE OBTAINED DURING THE DRILLING OPERATIONS, AND MAY FLUCTUATE THROUGHOUT THE YEAR.

▼ WATER LEVEL  
 ▼ CAVE IN DEPTH

NOTES: FOR ADDITIONAL TESTING INFORMATION, SEE REPORT OF GEOTECHNICAL INVESTIGATION.

BORING LOCATIONS (STATIONS) ARE NOT TO SCALE HORIZONTALLY.

Design	.	
Drawn	PKW	11/14
Checked	.	
Approved		
Squad		

S.H. 74D OVER ROCK CREEK  
 LOGAN COUNTY  
**FOUNDATION REPORT**  
 (SHEET 1 OF 2)  
 BRIDGE "A" @ STA. 67+62.00  
 State Job No. 28312(04) Sheet No. 19